

**SCREENING REPORT FOR AN ENVIRONMENTAL AUTHORIZATION AS
REQUIRED BY THE 2014 EIA REGULATIONS – PROPOSED SITE
ENVIRONMENTAL SENSITIVITY**

EIA Reference number: FS14026PR

Project name: Karehout

Project title: Karehout

Date screening report generated: 25/11/2024 12:44:31

Applicant: Solium Energy (Pty) Ltd

Compiler: GE

Compiler signature: 
.....

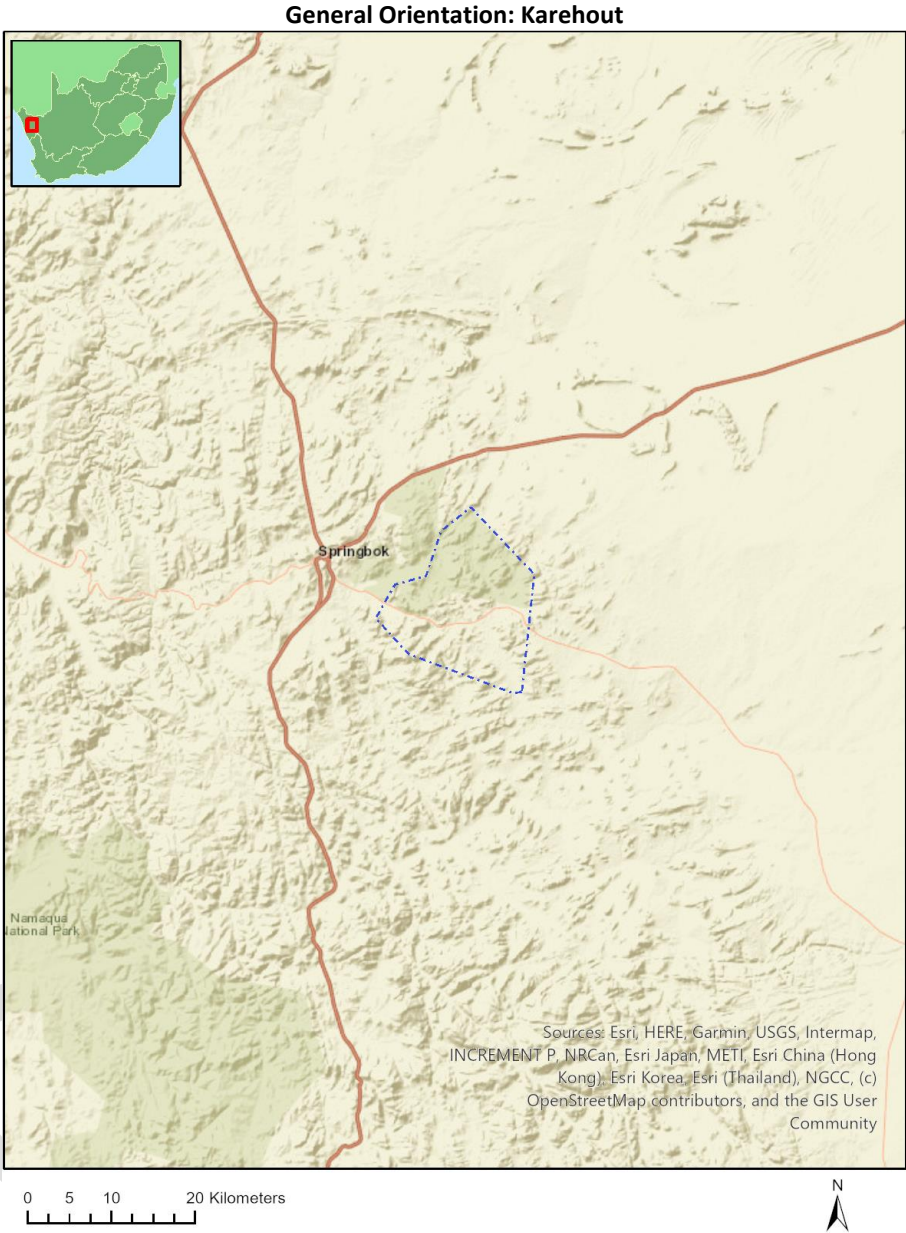
Application Category: Mining|Prospecting rights

Table of Contents

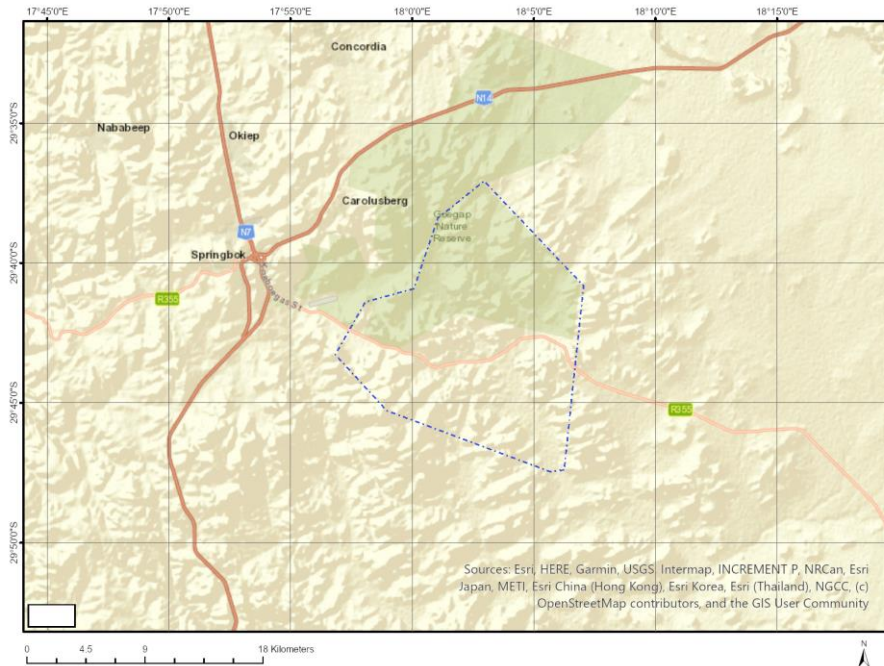
- Proposed Project Location 3
 - Orientation map 1: General location 3
- Map of proposed site and relevant area(s) 4
 - Cadastral details of the proposed site 4
 - Wind and Solar developments with an approved Environmental Authorisation or applications under consideration within 30 km of the proposed area 5
 - Environmental Management Frameworks relevant to the application 5
- Environmental screening results and assessment outcomes 5
 - Relevant development incentives, restrictions, exclusions or prohibitions 6
 - Proposed Development Area Environmental Sensitivity 6
 - Specialist assessments identified 6
- Results of the environmental sensitivity of the proposed area 8
 - MAP OF RELATIVE AGRICULTURE THEME SENSITIVITY 8
 - MAP OF RELATIVE ANIMAL SPECIES THEME SENSITIVITY 9
 - MAP OF RELATIVE AQUATIC BIODIVERSITY THEME SENSITIVITY 10
 - MAP OF RELATIVE ARCHAEOLOGICAL AND CULTURAL HERITAGE THEME SENSITIVITY 11
 - MAP OF RELATIVE CIVIL AVIATION THEME SENSITIVITY 12
 - MAP OF RELATIVE DEFENCE THEME SENSITIVITY 13
 - MAP OF RELATIVE PALEONTOLOGY THEME SENSITIVITY 14
 - MAP OF RELATIVE PLANT SPECIES THEME SENSITIVITY 15
 - MAP OF RELATIVE TERRESTRIAL BIODIVERSITY THEME SENSITIVITY 16

Proposed Project Location

Orientation map 1: General location



Map of proposed site and relevant area(s)



Cadastral details of the proposed site

Property details:

No	Farm Name	Farm/ Erf No	Portion	Latitude	Longitude	Property Type
1	PLATJES FONTEIN	223	0	29°45'31.37S	18°8'48.31E	Farm
2	BIESJESFONTEINJ	218	0	29°44'31.07S	17°53'39.86E	Farm
3	KAREHOUTE KLOOF	221	0	29°42'39.56S	18°2'42.88E	Farm
4	MELKBOSCHKUIL	132	0	29°38'54.66S	17°56'55.57E	Farm
5	VIOOLSDRIF	226	0	29°47'34.02S	18°8'25.97E	Farm
6	PLATJES FONTEIN	222	0	29°42'48.03S	18°9'49.09E	Farm
7	PLATJESFONTEIN ANNEXE	568	0	29°46'45	18°6'31.44E	Farm
8	KAIP	130	0	29°37'15.5S	18°7'14.31E	Farm
9	RATEL KRAAL	131	0	29°34'39.15S	18°4'22.62E	Farm
10	DEUR DRIFT	219	0	29°45'29.42S	17°57'16.95E	Farm
11	ORANJE FONTEIN	129	0	29°40'31.3S	18°9'27.27E	Farm
12	ORANJE FONTEIN	129	0	29°40'32.98S	18°9'25.33E	Farm Portion
13	KAIP	130	3	29°36'43S	18°6'31.31E	Farm Portion
14	RATEL KRAAL	131	0	29°35'39.22S	18°4'15.92E	Farm Portion
15	MELKBOSCHKUIL	132	25	29°42'20.67S	17°56'28.3E	Farm Portion
16	MELKBOSCHKUIL	132	21	29°40'41.4S	17°56'47.55E	Farm Portion
17	MELKBOSCHKUIL	132	5	29°40'57.2S	17°59'6.13E	Farm Portion
18	BIESJESFONTEINJ	218	18	29°43'24.27S	17°56'15.99E	Farm Portion
19	DEUR DRIFT	219	3	29°44'33.35S	17°57'32.21E	Farm Portion
20	KAREHOUTE KLOOF	221	1	29°40'31.31S	18°2'53.69E	Farm Portion
21	KAREHOUTE KLOOF	221	2	29°42'27.61S	18°2'58.54E	Farm Portion
22	KAREHOUTE KLOOF	221	3	29°42'28.19S	17°57'49.13E	Farm Portion
23	KAREHOUTE KLOOF	221	5	29°41'59.27S	17°57'57.76E	Farm Portion
24	KAREHOUTE KLOOF	221	0	29°44'37.72S	18°2'35.27E	Farm Portion
25	KAREHOUTE KLOOF	221	4	29°40'2.86S	18°0'29.2E	Farm Portion
26	PLATJES FONTEIN	222	0	29°42'48.03S	18°9'49.09E	Farm Portion

27	PLATJES FONTEIN	223	0	29°45'31.37S	18°8'48.31E	Farm Portion
28	VIOOLSDRIF	226	0	29°47'34.02S	18°8'25.97E	Farm Portion
29	PLATJESFONTEIN ANNEXE	568	0	29°46'4S	18°6'31.44E	Farm Portion

Development footprint¹ vertices:
No development footprint(s) specified.

Wind and Solar developments with an approved Environmental Authorisation or applications under consideration within 30 km of the proposed area

No	EIA Reference No	Classification	Status of application	Distance from proposed area (km)
1	14/12/16/3/3/2/346/1	Wind	Approved	25
2	14/12/16/3/3/1/2270	Wind	Approved	25
3	12/12/20/1721/AM5	Wind	Approved	6.9
4	14/12/16/3/3/2/386/1/AM1	Solar PV	Approved	17.1
5	14/12/16/3/3/2/386	Solar PV	Approved	17.1
6	14/12/16/3/3/1/557	Solar PV	Approved	8.2
7	12/12/20/1721/AM4	Wind	Approved	6.9
8	14/12/16/3/3/2/346/AM3	Wind	Approved	25
9	12/12/20/1721/AM2	Wind	Approved	6.9
10	14/12/16/3/3/1/511	Solar PV	Approved	0
11	14/12/16/3/3/2/346/AM4	Wind	Approved	25
12	14/12/16/3/3/2/386/AM2	Solar PV	Approved	17.1
13	12/12/20/1721/AM1	Wind	Approved	6.9
14	12/12/20/1721/AM3	Wind	Approved	6.9
15	12/12/20/1721/AM6	Wind	Approved	6.9
16	12/12/20/2656	Solar PV	Approved	12.1
17	12/12/20/2655	Solar PV	Approved	16.1
18	14/12/16/3/3/2/346/1/AM2	Wind	Approved	25
19	14/12/16/3/3/1/510	Solar PV	Approved	16.1
20	14/12/16/3/3/2/346/AM2	Wind	Approved	25
21	14/12/16/3/3/1/558	Solar PV	Approved	18.8

Environmental Management Frameworks relevant to the application

No intersections with EMF areas found.

Environmental screening results and assessment outcomes

The following sections contain a summary of any development incentives, restrictions, exclusions or prohibitions that apply to the proposed development site as well as the most environmental

¹ “development footprint”, means the area within the site on which the development will take place and includes all ancillary developments for example roads, power lines, boundary walls, paving etc. which require vegetation clearance or which will be disturbed and for which the application has been submitted.

sensitive features on the site based on the site sensitivity screening results for the application classification that was selected. The application classification selected for this report is: **Mining | Prospecting rights.**

Relevant development incentives, restrictions, exclusions or prohibitions

The following development incentives, restrictions, exclusions or prohibitions and their implications that apply to this site are indicated below.

Incentive, restriction or prohibition	Implication
Strategic Transmission Corridor-Northern corridor	https://screening.environment.gov.za/ScreeningDownloads/DevelopmentZones/Combined_EGI.pdf
Renewable energy development zones 8-Springbok	https://screening.environment.gov.za/ScreeningDownloads/DevelopmentZones/Combined_REDZ.pdf
Strategic Transmission Corridor-Expanded Western Corridor	https://screening.environment.gov.za/ScreeningDownloads/DevelopmentZones/Combined_EGI.pdf
Strategic Gas Pipeline Corridors-Phase 6: Abraham Villiers Bay (Northern Cape) to Oranjemund	https://screening.environment.gov.za/ScreeningDownloads/DevelopmentZones/Combined_GAS.pdf
South African Protected Areas	https://screening.environment.gov.za/ScreeningDownloads/DevelopmentZones/SAPAD_OR_2024_Q1_Metadata.pdf
Namaqua National Park Buffer	Namaqua_MPA_Management_Plan.pdf">https://screening.environment.gov.za/ScreeningDownloads/DevelopmentZones>Namaqua_MPA_Management_Plan.pdf

Proposed Development Area Environmental Sensitivity

The following summary of the development site environmental sensitivities is identified. Only the highest environmental sensitivity is indicated. The footprint environmental sensitivities for the proposed development footprint as identified, are indicative only and must be verified on site by a suitably qualified person before the specialist assessments identified below can be confirmed.

Theme	Very High sensitivity	High sensitivity	Medium sensitivity	Low sensitivity
Agriculture Theme		X		
Animal Species Theme		X		
Aquatic Biodiversity Theme	X			
Archaeological and Cultural Heritage Theme				X
Civil Aviation Theme		X		
Defence Theme				X
Paleontology Theme			X	
Plant Species Theme			X	
Terrestrial Biodiversity Theme	X			

Specialist assessments identified

Based on the selected classification, and the known impacts associated with the proposed development, the following list of specialist assessments have been identified for inclusion in the

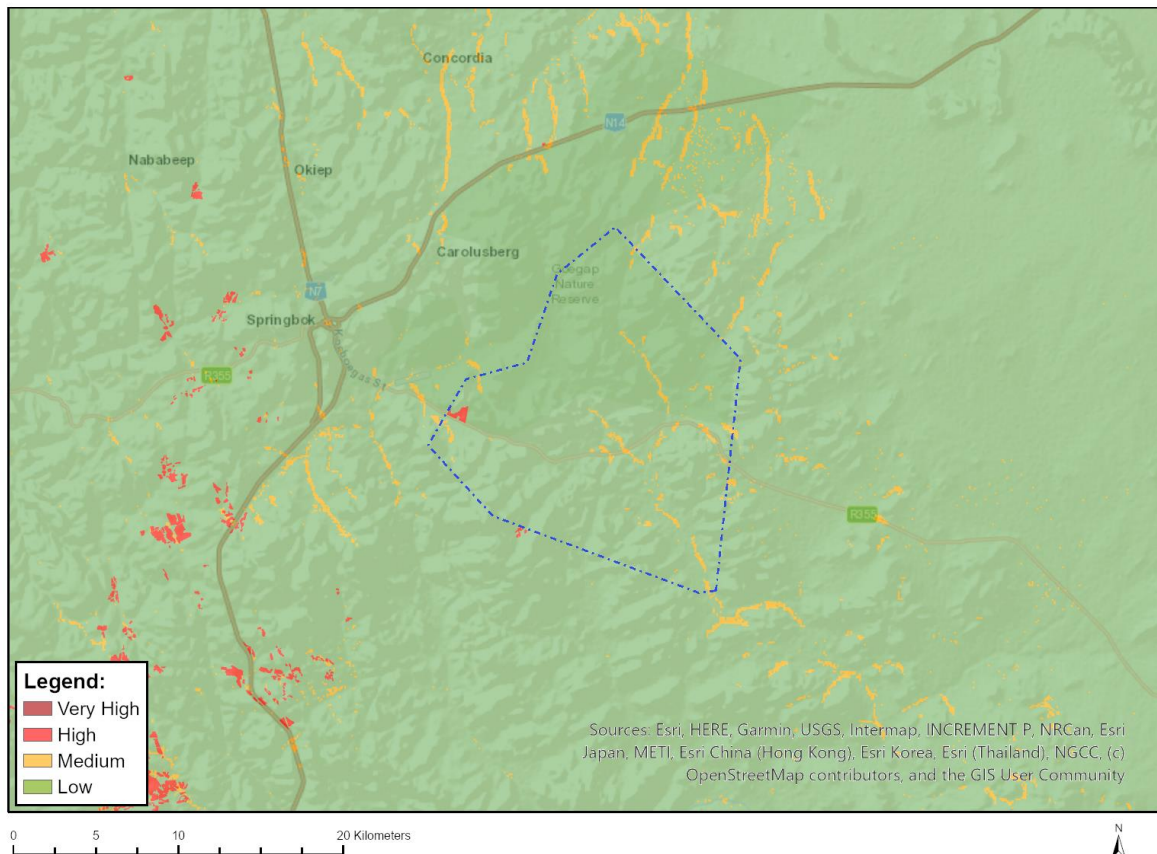
assessment report. It is the responsibility of the EAP to confirm this list and to motivate in the assessment report, the reason for not including any of the identified specialist study including the provision of photographic evidence of the site situation.

No	Specialist assessment	Assessment Protocol
1	Agricultural Impact Assessment	https://screening.environment.gov.za/ScreeningDownloads/AssessmentProtocols/Gazetted_General_Agriculture_Assessment_Protocols.pdf
2	Archaeological and Cultural Heritage Impact Assessment	https://screening.environment.gov.za/ScreeningDownloads/AssessmentProtocols/Gazetted_General_Requirement_Assessment_Protocols.pdf
3	Palaeontology Impact Assessment	https://screening.environment.gov.za/ScreeningDownloads/AssessmentProtocols/Gazetted_General_Requirement_Assessment_Protocols.pdf
4	Terrestrial Biodiversity Impact Assessment	https://screening.environment.gov.za/ScreeningDownloads/AssessmentProtocols/Gazetted_Terrestrial_Biodiversity_Assessment_Protocols.pdf
5	Aquatic Biodiversity Impact Assessment	https://screening.environment.gov.za/ScreeningDownloads/AssessmentProtocols/Gazetted_Aquatic_Biodiversity_Assessment_Protocols.pdf
6	Noise Impact Assessment	https://screening.environment.gov.za/ScreeningDownloads/AssessmentProtocols/Gazetted_Noise_Impacts_Assessment_Protocol.pdf
7	Radioactivity Impact Assessment	https://screening.environment.gov.za/ScreeningDownloads/AssessmentProtocols/Gazetted_General_Requirement_Assessment_Protocols.pdf
8	Plant Species Assessment	https://screening.environment.gov.za/ScreeningDownloads/AssessmentProtocols/Gazetted_Plant_Species_Assessment_Protocols.pdf
9	Animal Species Assessment	https://screening.environment.gov.za/ScreeningDownloads/AssessmentProtocols/Gazetted_Animal_Species_Assessment_Protocols.pdf

Results of the environmental sensitivity of the proposed area.

The following section represents the results of the screening for environmental sensitivity of the proposed site for relevant environmental themes associated with the project classification. It is the duty of the EAP to ensure that the environmental themes provided by the screening tool are comprehensive and complete for the project. Refer to the disclaimer.

MAP OF RELATIVE AGRICULTURE THEME SENSITIVITY



Very High sensitivity	High sensitivity	Medium sensitivity	Low sensitivity
	X		

Sensitivity Features:

Sensitivity	Feature(s)
High	Annual Crop Cultivation / Planted Pastures Rotation; Land capability; 01. Very low/02. Very low/03. Low-Very low/04. Low-Very low/05. Low
Low	Land capability; 01. Very low/02. Very low/03. Low-Very low/04. Low-Very low/05. Low
Medium	Land capability; 06. Low-Moderate/07. Low-Moderate/08. Moderate

MAP OF RELATIVE ANIMAL SPECIES THEME SENSITIVITY



Where only a sensitive plant unique number or sensitive animal unique number is provided in the screening report and an assessment is required, the environmental assessment practitioner (EAP) or specialist is required to email SANBI at eiadatarequests@sanbi.org.za listing all sensitive species with their unique identifiers for which information is required. The name has been withheld as the species may be prone to illegal harvesting and must be protected. SANBI will release the actual species name after the details of the EAP or specialist have been documented.

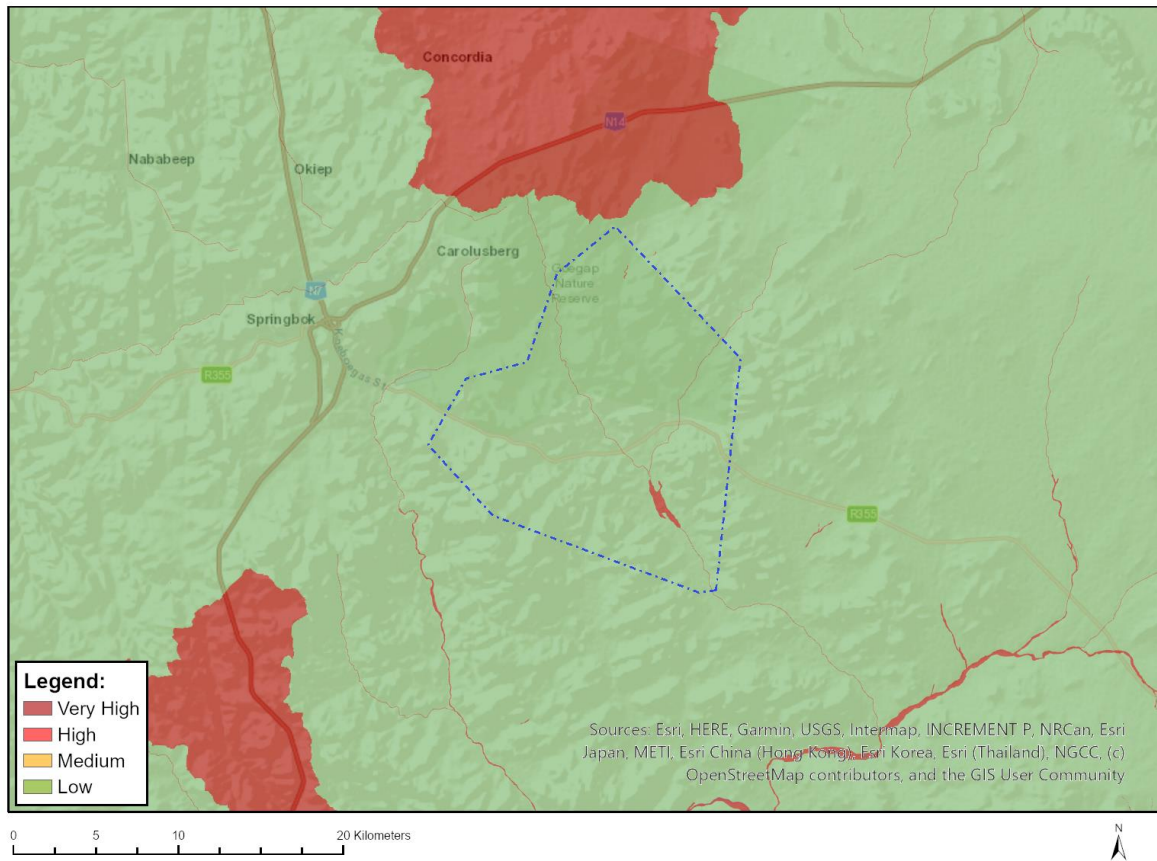
Very High sensitivity	High sensitivity	Medium sensitivity	Low sensitivity
	X		

Sensitivity Features:

Sensitivity	Feature(s)
High	Aves-Neotis ludwigii
High	Aves-Falco biarmicus
High	Aves-Aquila verreauxii
High	Aves-Circus maurus
High	Aves-Sagittarius serpentarius
Medium	Aves-Neotis ludwigii
Medium	Aves-Sagittarius serpentarius
Medium	Aves-Calendulauda burra
Medium	Aves-Afrotis afra
Medium	Aves-Aquila verreauxii
Medium	Aves-Circus maurus
Medium	Insecta-Chrysothrips beaufortia stepheni
Medium	Sensitive species 32

Medium	Invertebrate-Brinckiella karoensis
Medium	Invertebrate-Brinckiella mauerbergerorum
Medium	Invertebrate-Brinckiella arboricola
Medium	Invertebrate-Peringueyacriss namaqua

MAP OF RELATIVE AQUATIC BIODIVERSITY THEME SENSITIVITY

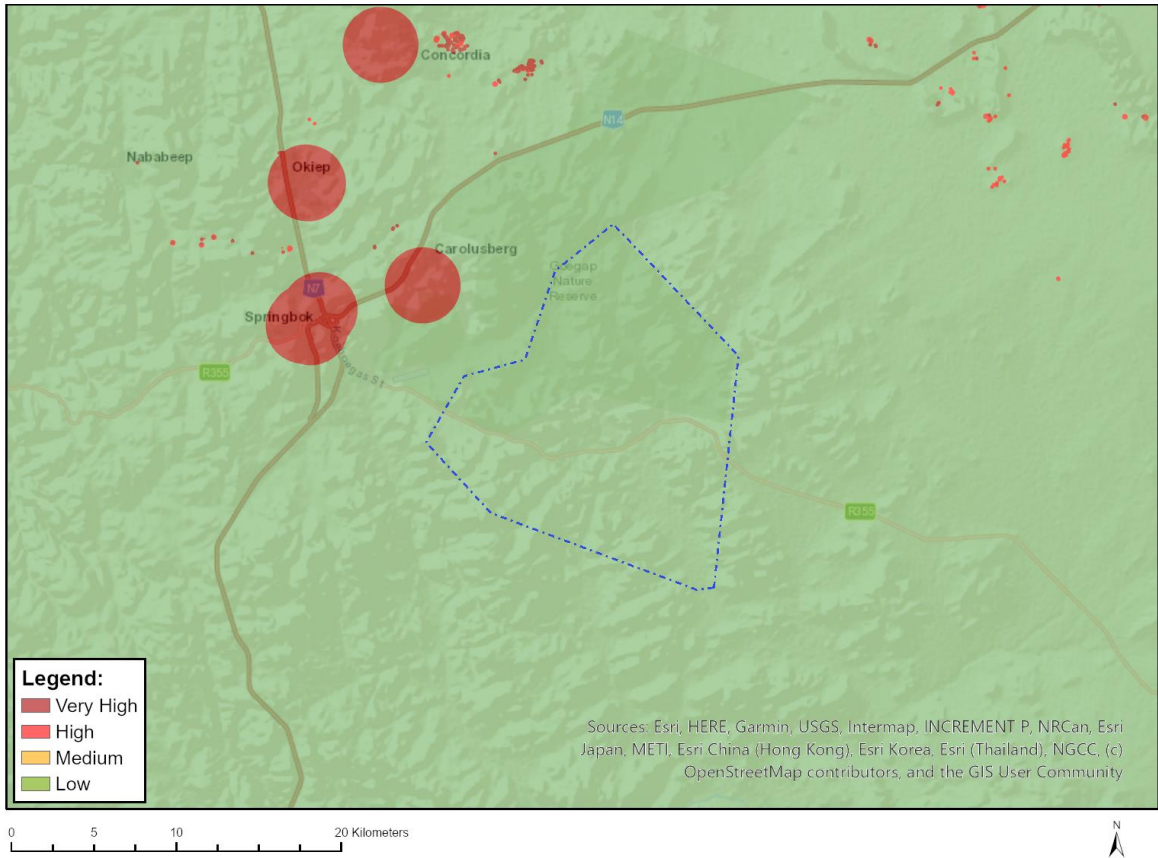


Very High sensitivity	High sensitivity	Medium sensitivity	Low sensitivity
X			

Sensitivity Features:

Sensitivity	Feature(s)
Low	Low sensitivity
Very High	Rivers_AB
Very High	Wetlands_(River)

MAP OF RELATIVE ARCHAEOLOGICAL AND CULTURAL HERITAGE THEME SENSITIVITY

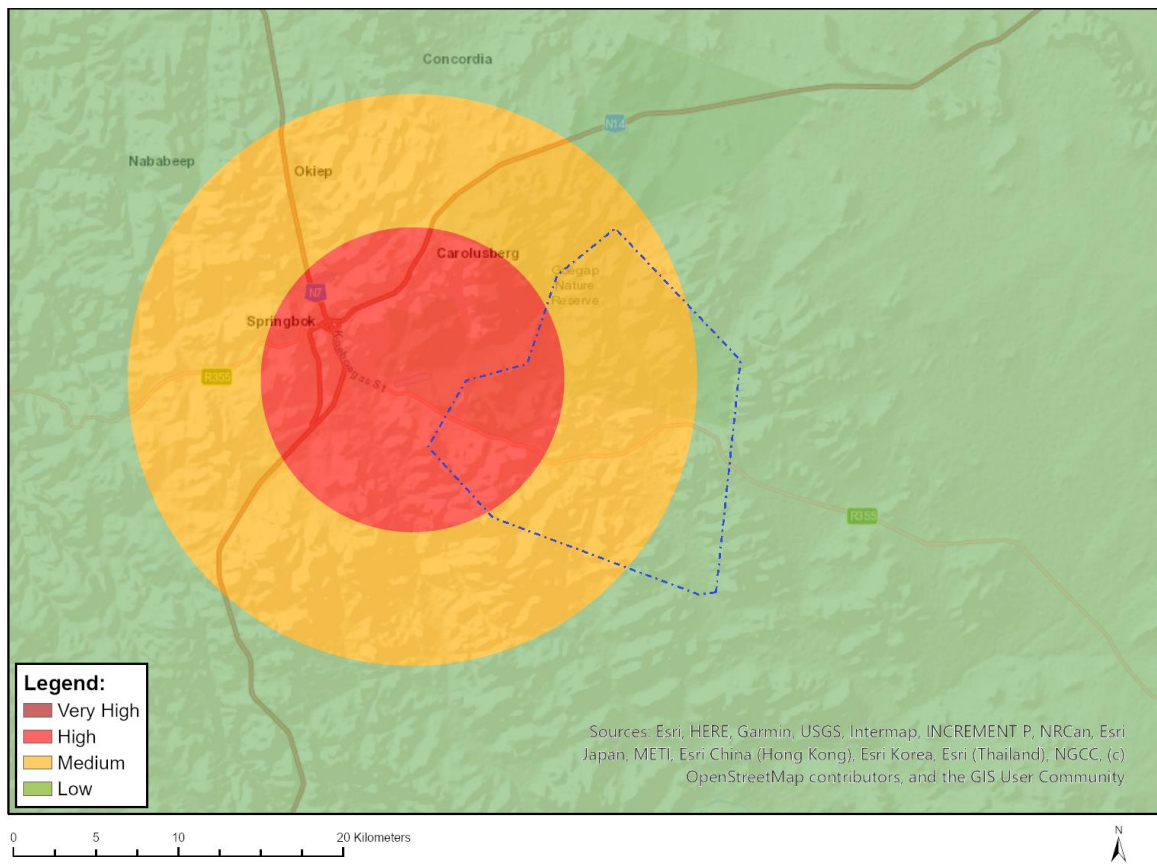


Very High sensitivity	High sensitivity	Medium sensitivity	Low sensitivity
			X

Sensitivity Features:

Sensitivity	Feature(s)
Low	Low sensitivity

MAP OF RELATIVE CIVIL AVIATION THEME SENSITIVITY

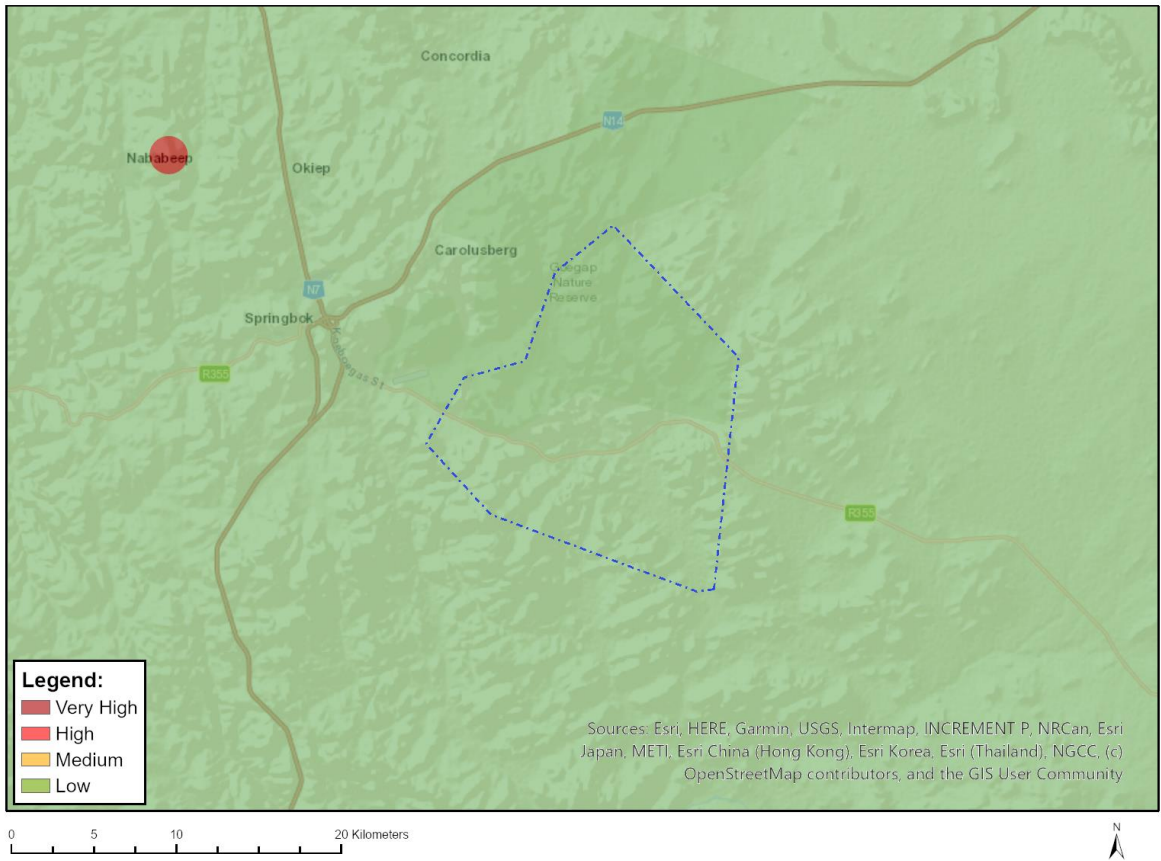


Very High sensitivity	High sensitivity	Medium sensitivity	Low sensitivity
	X		

Sensitivity Features:

Sensitivity	Feature(s)
High	Within 8 km of other civil aviation aerodrome
Low	Low sensitivity
Medium	Between 8 and 15 km of other civil aviation aerodrome

MAP OF RELATIVE DEFENCE THEME SENSITIVITY

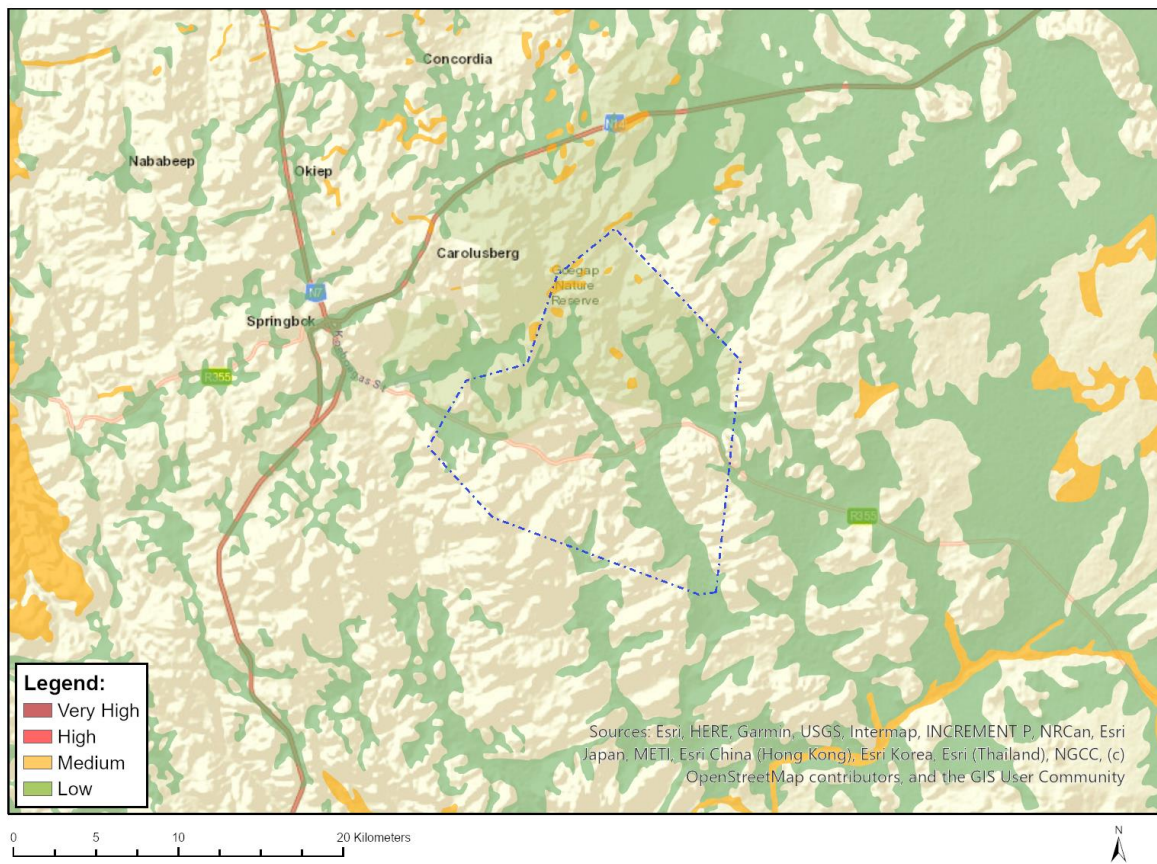


Very High sensitivity	High sensitivity	Medium sensitivity	Low sensitivity
			X

Sensitivity Features:

Sensitivity	Feature(s)
Low	Low Sensitivity

MAP OF RELATIVE PALEONTOLOGY THEME SENSITIVITY

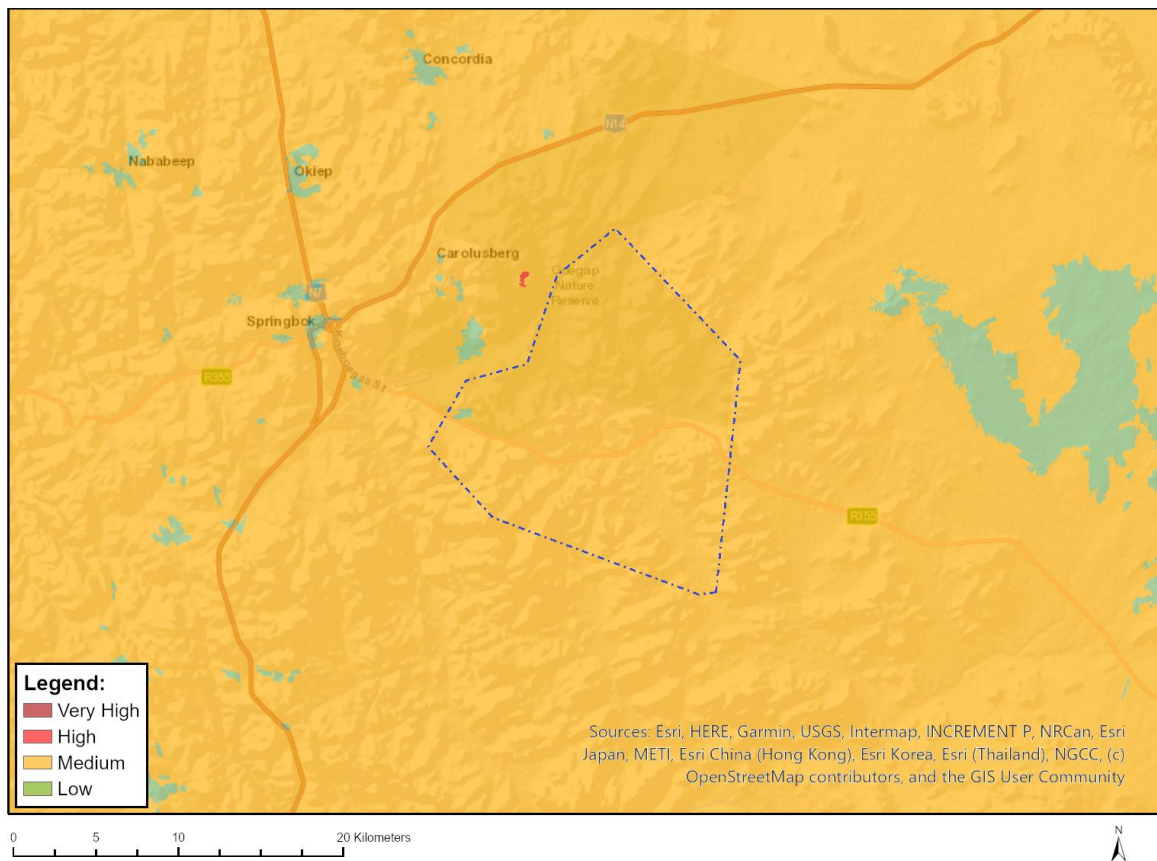


Very High sensitivity	High sensitivity	Medium sensitivity	Low sensitivity
		X	

Sensitivity Features:

Sensitivity	Feature(s)
Low	Features with a Low paleontological sensitivity
Medium	Features with a Medium paleontological sensitivity

MAP OF RELATIVE PLANT SPECIES THEME SENSITIVITY



Where only a sensitive plant unique number or sensitive animal unique number is provided in the screening report and an assessment is required, the environmental assessment practitioner (EAP) or specialist is required to email SANBI at eiadatarequests@sanbi.org.za listing all sensitive species with their unique identifiers for which information is required. The name has been withheld as the species may be prone to illegal harvesting and must be protected. SANBI will release the actual species name after the details of the EAP or specialist have been documented.

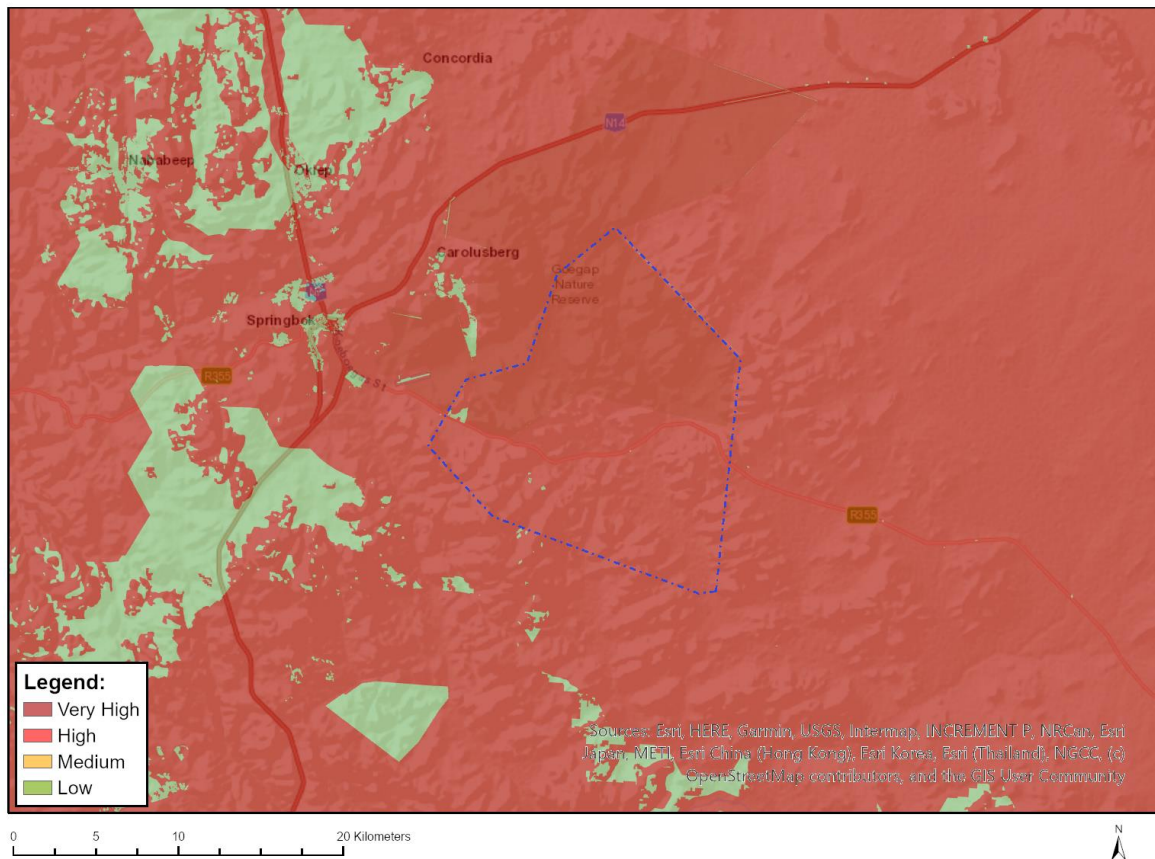
Very High sensitivity	High sensitivity	Medium sensitivity	Low sensitivity
		X	

Sensitivity Features:

Sensitivity	Feature(s)
Low	Low Sensitivity
Medium	Sensitive species 646
Medium	Sensitive species 425
Medium	Sensitive species 904
Medium	Sensitive species 1222
Medium	Sensitive species 888
Medium	Sensitive species 188
Medium	Sensitive species 1281
Medium	Sensitive species 16
Medium	Sensitive species 119
Medium	Sensitive species 180
Medium	Annesorhiza latifolia
Medium	Quaqua cincta

Medium	Sensitive species 12
Medium	Sensitive species 1049
Medium	Sensitive species 838
Medium	Sensitive species 463
Medium	Hesperantha flava
Medium	Sensitive species 76
Medium	Sensitive species 122
Medium	Sensitive species 744
Medium	Sensitive species 144

MAP OF RELATIVE TERRESTRIAL BIODIVERSITY THEME SENSITIVITY



Very High sensitivity	High sensitivity	Medium sensitivity	Low sensitivity
X			

Sensitivity Features:

Sensitivity	Feature(s)
Low	Low Sensitivity
Very High	Goegap Nature Reserve
Very High	CBA 1
Very High	CBA 2
Very High	ESA
Very High	National Protected Area Expansion Strategy (NPAES)